

NH Department of Health and Human Services  
129 Pleasant Street – Hugh Gallen State Office Park  
Concord, NH 03301

**PRESS RELEASE**  
**FOR IMMEDIATE RELEASE**  
**September 24, 2020**

**FOR MORE INFORMATION**  
State Joint Information Center  
603-223-6169  
[jic@dos.nh.gov](mailto:jic@dos.nh.gov)

## **NH DHHS COVID-19 Update – September 24, 2020**

**Concord, NH** – The New Hampshire Department of Health and Human Services (DHHS) has issued the following update on the new coronavirus, COVID-19.

On Thursday, September 24, 2020, DHHS announced 37 new positive test results for COVID-19. There have now been 8,044 cases of COVID-19 diagnosed in New Hampshire. Several cases are still under investigation. Additional information from ongoing investigations will be incorporated into future COVID-19 updates. Of those with complete information, there are nine individuals under the age of 18 and the rest are adults with 43% being female and 57% being male. The new cases reside in Strafford (10), Rockingham (8), Hillsborough County other than Manchester and Nashua (6), Merrimack (1), and Grafton (1) counties, and in the cities of Manchester (7) and Nashua (3). The county of residence is being determined for one new case.

Four new hospitalized cases were identified for a total of 732 (9%) of 8,044 cases. Three of the new cases had no identified risk factors. Community-based transmission continues to occur in the State and has been identified in all counties. Of those with complete risk information, most of the cases have either had close contact with a person with a confirmed COVID-19 diagnosis, are associated with an outbreak setting, or have recently traveled.

During the September 24 press conference, a request was made for an update on the number of remote learning centers. Remote learning centers were established by Governor Sununu under [Emergency Order #67](#), which requires centers to [submit a verification form](#) to the DHHS Child Care Licensing Unit. Currently, 7 remote learning centers have been verified in New Hampshire.

### **Current Situation in New Hampshire**

#### **New Hampshire 2019 Novel Coronavirus (COVID-19) Summary Report (data updated September 24, 2020, 9:00 AM)**

NH Persons with COVID-19 <sub>1</sub>	8,044
Recovered	7,325 (91%)
Deaths Attributed to COVID-19	438 (5%)
Total Current COVID-19 Cases	281

Persons Who Have Been Hospitalized for COVID-19	732 (9%)
Current Hospitalizations	16
Total Persons Tested at Selected Laboratories, Polymerase Chain Reaction (PCR) <sup>2</sup>	247,151
Total Persons Tested at Selected Laboratories, Antibody Laboratory Tests <sup>2</sup>	30,901
Persons with Specimens Submitted to NH PHL	46,054
Persons with Test Pending at NH PHL <sup>3</sup>	805
Persons Being Monitored in NH (approximate point in time)	2,350

<sup>1</sup>Includes specimens positive at any laboratory and those confirmed by CDC confirmatory testing.

<sup>2</sup>Includes specimens tested at the NH Public Health Laboratories (PHL), LabCorp, Quest, Dartmouth-Hitchcock Medical Center, and those sent to CDC prior to NH PHL testing capacity.

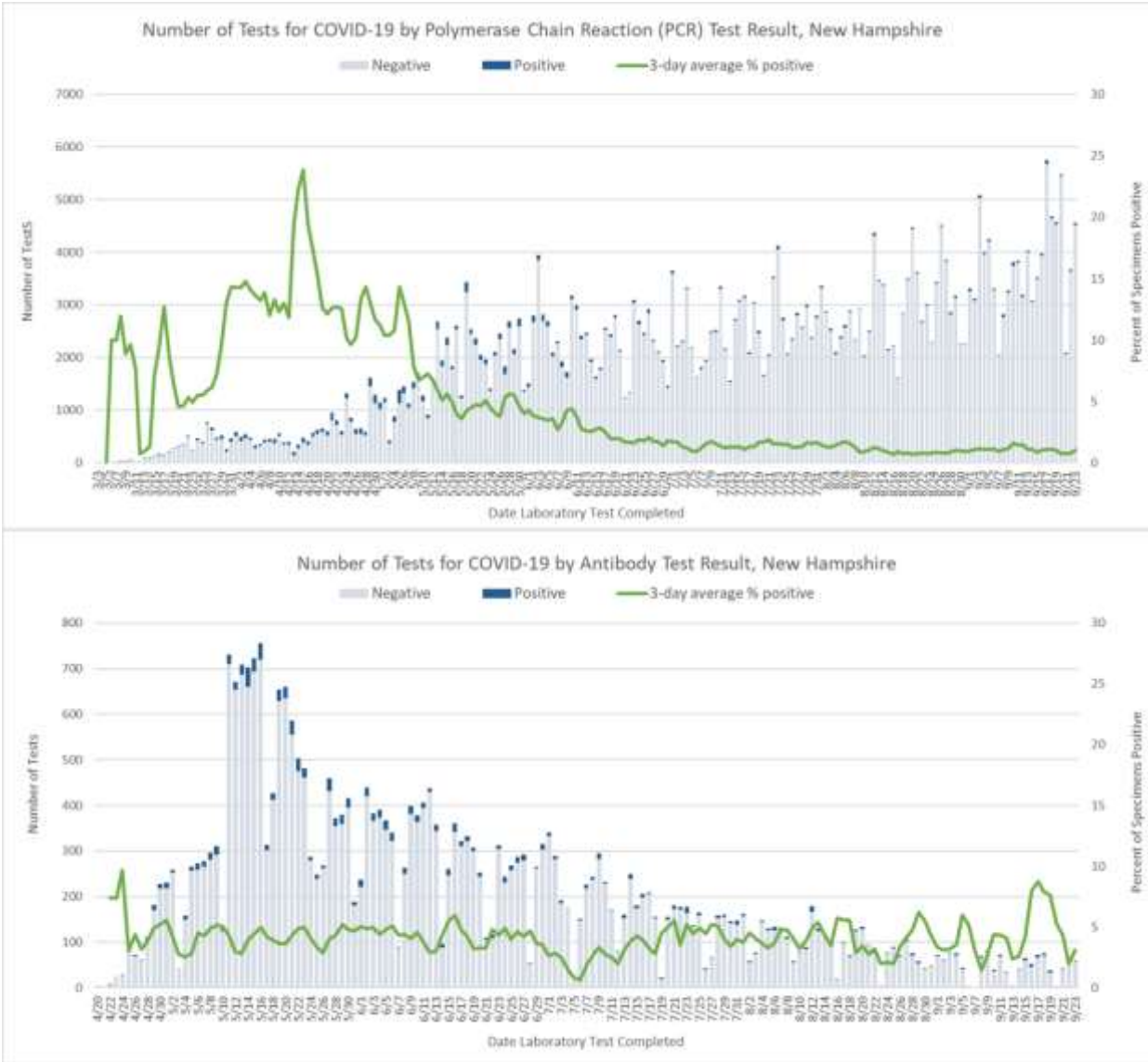
<sup>3</sup>Includes specimens received and awaiting testing at NH PHL. Does not include tests pending at commercial laboratories.

### Number of Tests Conducted by Date of Report to NH DHHS

Polymerase Chain Reaction (PCR) Tests								
Testing Laboratory	9/17	9/18	9/19	9/20	9/21	9/22	9/23	Daily Average
NH Public Health Laboratories	1,165	892	623	1,244	710	826	543	858
LabCorp	738	848	865	512	300	680	948	699
Quest Diagnostics	2,784	1,142	1,786	2,994	503	791	2,045	1,721
Mako Medical	11	218	45	29	0	12	9	46
Dartmouth-Hitchcock Medical Center	588	1,091	724	424	231	917	526	643
Other NH Hospital Laboratory	274	278	233	159	218	309	366	262
Other Laboratory*	191	209	296	110	122	142	125	171
Total	5,751	4,678	4,572	5,472	2,084	3,677	4,562	4,399
Antibody Laboratory Tests								
Testing Laboratory	9/17	9/18	9/19	9/20	9/21	9/22	9/23	Daily Average
LabCorp	12	9	12	0	0	6	8	7
Quest Diagnostics	38	56	22	4	19	37	41	31
Dartmouth-Hitchcock Medical Center	7	4	2	0	7	12	7	6
Other Laboratory*	13	4	0	0	11	1	4	5

Total	70	73	36	4	37	56	60	48
-------	----	----	----	---	----	----	----	----

\* Includes out-of-state public health laboratories, out-of-state hospital laboratories, and other commercial laboratories not listed in the above table.



[NH DHHS Daily Update on COVID-19 Archive](#)

For more information, please visit the DHHS COVID-19 webpage at <https://www.nh.gov/covid19>.

###